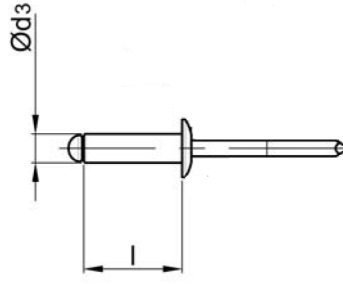
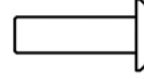


# STANDART PERÇİN SS/SS BOMBE KAFA

## OPEN TYPE SS/SS DOME HEAD



Paslanmaz Çelik  
Parlatılmış


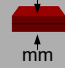


Stainless Steel  
Polished

Paslanmaz Çelik  
Parlatılmış



Stainless Steel  
Polished

Ø d3			l [+1/-1] [mm]		ÜRÜN NO PART NO		
3,0 [+0.08/-0.15]	Ø 3,1	$\begin{matrix} \updownarrow \\ \rightleftharpoons \end{matrix}$ [N] : 2.000 $\rightleftharpoons$ [N] : 1.600	6,0	0,5 - 3,0	01.013311.30060		
			8,0	3,0 - 5,0	01.013311.30080		
			10,0	5,0 - 6,5	01.013311.30100		
			12,0	6,5 - 8,5	01.013311.30120		
3,2 [+0.08/-0.15]	Ø 3,3	$\begin{matrix} \updownarrow \\ \rightleftharpoons \end{matrix}$ [N] : 2.500 $\rightleftharpoons$ [N] : 1.800	4,0	- 1,5	01.013311.32040		
			6,0	0,5 - 3,0	01.013311.32060		
			8,0	3,0 - 5,0	01.013311.32080		
			10,0	5,0 - 6,5	01.013311.32100*		
			12,0	6,5 - 8,5	01.013311.32120		
			14,0	8,5 - 10,5	01.013311.32140*		
4,0 [+0.08/-0.15]	Ø 4,1	$\begin{matrix} \updownarrow \\ \rightleftharpoons \end{matrix}$ [N] : 3.800 $\rightleftharpoons$ [N] : 3.100	6,0	1,0 - 2,5	01.013311.40060		
			8,0	2,5 - 4,5	01.013311.40080		
			10,0	4,5 - 6,5	01.013311.40100		
			13,0	8,5 - 10,0	01.013311.40130		
			16,0	10,0 - 12,0	01.013311.40160		
			18,0	12,0 - 14,0	01.013311.40180		
			20,0	14,0 - 16,0	01.013311.40200		
4,8 [+0.08/-0.15]	Ø 4,9	$\begin{matrix} \updownarrow \\ \rightleftharpoons \end{matrix}$ [N] : 6.000 $\rightleftharpoons$ [N] : 4.500	8,0	2,0 - 4,0	01.013311.48080		
			10,0	4,0 - 6,0	01.013311.48100		
			12,0	6,0 - 8,0	01.013311.48120		
			14,0	6,0 - 9,5	01.013311.48140		
			16,0	8,0 - 11,0	01.013311.48160		
6,0 [+0.08/-0.15]	Ø 6,1	$\begin{matrix} \updownarrow \\ \rightleftharpoons \end{matrix}$ [N] : 8.830 $\rightleftharpoons$ [N] : 6.500	10,0	3,0 - 4,0	01.013311.60100		
			12,0	4,0 - 6,0	01.013311.60120		
			15,0	6,0 - 9,0	01.013311.60150		
			18,0	9,0 - 12,0	01.013311.60180		

