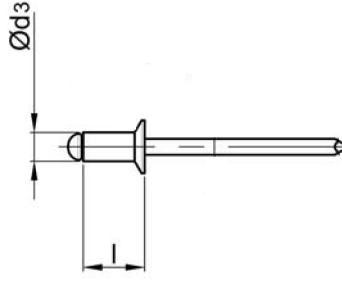
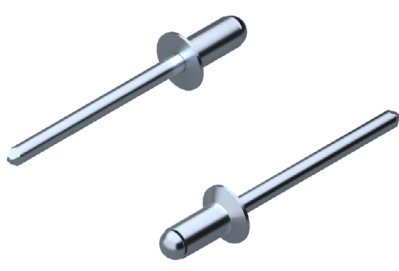
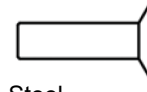


# STANDART PERÇİN ST/ST HAVŞA KAFA

## OPEN TYPE ST/ST COUNTERSUNK HEAD

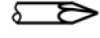


Çelik  
Çinko Kaplama



Steel  
Zink Plated

Çelik  
Çinko Kaplama



Steel  
Zink Plated

Ø d3			l [+1/-1] [mm]		ÜRÜN NO PART NO		
* <b>3,0</b> [+0,08/-0,15]	Ø 3,1	$\updownarrow$ [N] : 1.125 $\leftrightarrow$ [N] : 915	6,0	1,5 - 3,0	01.012221.30060		
			8,0	3,0 - 5,0	01.012221.30080		
			10,0	5,0 - 6,5	01.012221.30100		
			12,0	6,5 - 8,0	01.012221.30120		
* <b>3,2</b> [+0,08/-0,15]	Ø 3,3	$\updownarrow$ [N] : 1.285 $\leftrightarrow$ [N] : 1.060	6,0	1,5 - 3,0	01.012221.32060		
			8,0	3,0 - 5,0	01.012221.32080		
			10,0	5,0 - 6,5	01.012221.32100		
			12,0	6,5 - 8,0	01.012221.32120		
* <b>4,0</b> [+0,08/-0,15]	Ø 4,1	$\updownarrow$ [N] : 1.990 $\leftrightarrow$ [N] : 1.550	6,0	2,0 - 3,0	01.012221.40060		
			8,0	3,0 - 5,0	01.012221.40080		
			10,0	5,0 - 6,5	01.012221.40100		
			12,0	6,5 - 8,0	01.012221.40120		
			14,0	8,0 - 10,0	01.012221.40140		
* <b>4,8</b> [+0,08/-0,15]	Ø 4,9	$\updownarrow$ [N] : 2.920 $\leftrightarrow$ [N] : 2.300	16,0	8,0 - 12,0	01.012221.40160		
			8,0	2,5 - 4,0	01.012221.48080		
			10,0	4,0 - 6,0	01.012221.48100		
			12,0	6,0 - 8,0	01.012221.48120		
			14,0	6,0 - 9,0	01.012221.48140		
			16,0	8,0 - 11,0	01.012221.48160		
18,0	11,0 - 13,0	01.012221.48180					
20,0	11,0 - 15,0	01.012221.48200					

