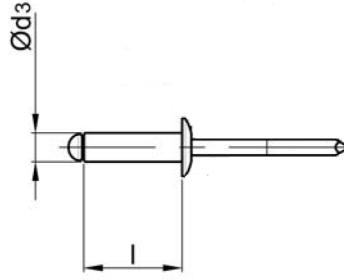
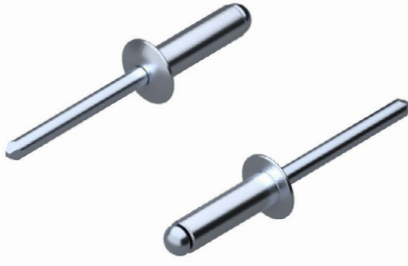
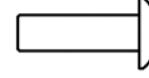


# STANDART PERÇİN ST/ST BOMBE KAFA

## OPEN TYPE ST/ST DOME HEAD

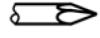


Çelik  
Çinko Kaplama


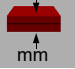


Steel  
Zink Plated

Çelik  
Çinko Kaplama



Steel  
Zink Plated

Ø d3	 [mm]		l [+1/-2] [mm]	 mm	ÜRÜN NO PART NO		
3,0 [+0.08/-0.15]	Ø 3,1	$\updownarrow$ [N] : 1.125 $\leftrightarrow$ [N] : 915	6,0	0,5 - 3,0	01.012211.30060		
			8,0	3,0 - 5,0	01.012211.30080		
			10,0	5,0 - 6,5	01.012211.30100		
			12,0	6,5 - 8,0	01.012211.30120		
			14,0	9,0 - 11,0	01.012211.30140		
3,2 [+0.08/-0.15]	Ø 3,3	$\updownarrow$ [N] : 1.285 $\leftrightarrow$ [N] : 1.060	6,0	0,5 - 3,0	01.012211.32060		
			8,0	3,0 - 5,0	01.012211.32080		
			10,0	5,0 - 6,5	01.012211.32100		
			12,0	6,5 - 8,0	01.012211.32120		
			14,0	7,5 - 10,5	01.012211.32140*		
			16,0	8,0 - 12,0	01.012211.32160*		
4,0 [+0.08/-0.15]	Ø 4,1	$\updownarrow$ [N] : 1.990 $\leftrightarrow$ [N] : 1.550	6,0	1,0 - 3,0	01.012211.40060		
			8,0	3,0 - 5,0	01.012211.40080		
			10,0	5,0 - 6,5	01.012211.40100		
			12,0	6,5 - 9,5	01.012211.40120		
			14,0	8,5 - 10,0	01.012211.40140		
			16,0	9,0 - 12,0	01.012211.40160		
			18,0	12,0 - 14,0	01.012211.40180		
			20,0	12,0 - 16,0	01.012211.40200		
4,8 [+0.08/-0.15]	Ø 4,9	$\updownarrow$ [N] : 2.920 $\leftrightarrow$ [N] : 2.300	6,0	1,0 - 2,5	01.012211.48060		
			8,0	2,5 - 4,0	01.012211.48080		
			10,0	4,0 - 6,0	01.012211.48100		
			12,0	6,0 - 8,0	01.012211.48120		
			14,0	7,5 - 9,5	01.012211.48140		
			16,0	8,0 - 11,0	01.012211.48160		
			18,0	10,0 - 13,0	01.012211.48180		
			20,0	11,0 - 15,0	01.012211.48200		
			22,0	13,0 - 16,5	01.012211.48220		
			25,0	15,0 - 19,5	01.012211.48250		
			28,0	20,0 - 23,0	01.012211.48280*		
			30,0	23,0 - 26,0	01.012211.48300*		
6,0 [+0.08/-0.15]	Ø 6,1	$\updownarrow$ [N] : 5.020 $\leftrightarrow$ [N] : 4.040	12,0	4,0 - 6,0	01.012211.60120		
			15,0	6,0 - 9,0	01.012211.60150		
			18,0	10,0 - 12,0	01.012211.60180		
			20,0	10,0 - 14,0	01.012211.60200		
			25,0	14,0 - 19,0	01.012211.60260		
			30,0	19,0 - 24,0	01.012211.60300		

