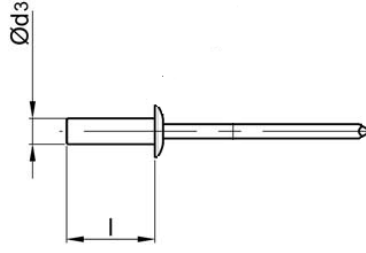
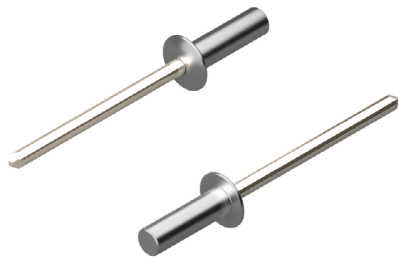
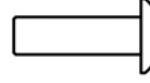


SIZDIRMAZ PERÇİN AL/SS BOMBE Kafa

SEALED RIVET AL/SS DOME HEAD

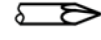


Alüminyum [AlMg3,5]
Parlatılmış




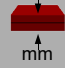
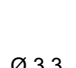
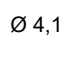
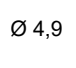
Aluminium [AlMg3,5]
Polished

Paslanmaz Çelik
Parlatılmış



Stainless Steel
Polished

Sızdırmaz
Perçinler

Ø d3			l [+1/-2] [mm]		ÜRÜN NO PART NO			
* 3,2 [+0.08]		Ø 3,3	⇕ [N] : 1.250 ⇔ [N] : 1.070	6,0	0,5 - 2,0	01.031311.32060		
				8,0	2,0 - 3,5	01.031311.32080		
				9,5	3,5 - 5,0	01.031311.32095		
				11,0	5,0 - 6,5	01.031311.32110		
				12,7	6,5 - 8,0	01.031311.32127		
* 4,0 [+0.08]		Ø 4,1	⇕ [N] : 2.240 ⇔ [N] : 1.700	8,0	0,5 - 3,5	01.031311.40080		
				9,5	3,5 - 5,0	01.031311.40095		
				11,0	5,0 - 6,5	01.031311.40110		
				12,7	6,5 - 8,0	01.031311.40127		
* 4,8 [+0.08]		Ø 4,9	⇕ [N] : 1.990 ⇔ [N] : 1.550	8,0	1,0 - 3,0	01.031311.48080		
				9,5	3,0 - 5,0	01.031311.48095		
				11,0	5,0 - 6,0	01.031311.48110		
				12,5	6,0 - 7,5	01.031311.48125		
				14,0	7,5 - 9,0	01.031311.48140		
				16,0	9,0 - 11,0	01.031311.48160		
				18,0	11,0 - 13,0	01.031311.48180		
21,0	13,0 - 16,0	01.031311.48210						

