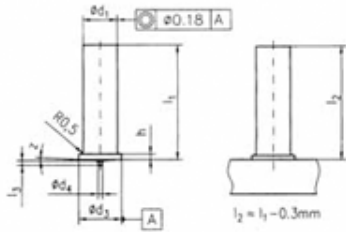


# MİL SAPLAMALAR (TİP UT)

PINS TYPE UT



d <sub>1</sub>	l <sub>1</sub> +0.6	d <sub>3</sub> ±0.2	d <sub>4</sub> ±0.08	l <sub>3</sub> ±0.05	h	l <sub>2</sub>	z ±1
Dia. 3	6-30	4.5	0.6	0.55	0.7	= l <sub>1</sub> - 0.3	30
Dia. 4	6-40	5.5	0.65	0.55	1.4		
Dia. 5	6-40	6.5	0.75	0.8	0.8		
Dia. 6	8-50	7.5	0.75	0.8	1.4		
Dia. 7.1	10-55	8.5-9.0	0.82	0.9			

Malzemeler / Material : Steel (4.8) copper plated,  
1.4301/03 (A2-50) , EN AW-AIMg3, CuZn37 (Ms63)

Tavsiye Edilen Güç Üniteleri / Recommended power units :

CD 1501, CD 2301, CD 3101, CDM 2401, CDM 3201, SCD 3201

Tavsiye Edilen Kaynak Tabancaları / Recommended welding guns:

C 08, CA 08

Tavsiye Edilen Otomatik Kaynak Tabancaları Kafaları / Recommended welding guns heads:

PAH-1, KAH 412 KAH 412 LA