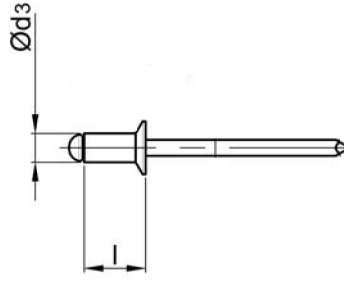
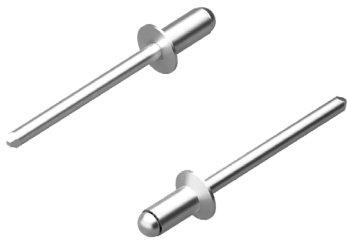
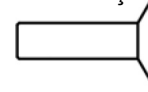


# STANDART PERÇİN AL/ST HAVŞA KAFA

## OPEN TYPE AL/ST COUNTERSUNK HEAD

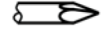


Alüminyum [AlMg3,5]  
Parlatılmış


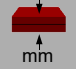


Aluminium [AlMg3,5]  
Polished

Çelik  
Çinko Kaplama



Steel  
Zink Plated

Ø d3			l [+1/-1] [mm]		ÜRÜN NO PART NO		
2,4 [+0.08/-0.10]	Ø 2,5	⇕ [N] : 355 ⇔ [N] : 315	6,0	2,0 - 4,0	01.011221.24060		
			8,0	4,0 - 6,0	01.011221.24080		
			10,0	6,0 - 8,0	01.011221.24100		
3,0 [+0.08/-0.15]	Ø 3,1	⇕ [N] : 810 ⇔ [N] : 620	6,0	2,0 - 3,5	01.011221.30060		
			8,0	3,5 - 5,0	01.011221.30080*		
			10,0	5,0 - 7,0	01.011221.30100		
3,2 [+0.08/-0.15]	Ø 3,3	⇕ [N] : 980 ⇔ [N] : 760	6,0	2,0 - 3,5	01.011221.32060		
			8,0	3,5 - 5,0	01.011221.32080*		
			10,0	5,0 - 7,0	01.011221.32100		
			12,0	7,0 - 9,0	01.011221.32120*		
4,0 [+0.08/-0.15]	Ø 4,1	⇕ [N] : 1.600 ⇔ [N] : 1.200	6,0	2,0 - 3,0	01.011221.40060		
			8,0	3,0 - 5,0	01.011221.40080		
			10,0	5,0 - 6,5	01.011221.40100		
			12,0	6,5 - 8,6	01.011221.40120*		
			14,0	8,5 - 10,5	01.011221.40140		
* 4,8 [+0.08/-0.15]	Ø 4,9	⇕ [N] : 2.230 ⇔ [N] : 1.690	8,0	2,5 - 4,0	01.011221.48080		
			10,0	4,0 - 6,0	01.011221.48100		
			12,0	6,0 - 8,0	01.011221.48120		
			14,0	8,0 - 10,0	01.011221.48140		
			16,0	8,0 - 12,0	01.011221.48160		
			18,0	10,0 - 13,0	01.011221.48180		
			20,0	12,0 - 15,0	01.011221.48200		
			25,0	16,0 - 20,0	01.011221.48250*		

